

**Document Title** : Procedure to install BU-69092S0 AceXtreme C SDK on Windows 10 and above

**Document No** : AN0004

**Author** : Ganesh Okade, RTips Technologies

**Last edited** : Oct 06, 2024

**Introduction** : This document explains the steps for installing DDC's AceXtreme 'C' SDK on Windows 10 and above and also setting up the Logical Device Number (LDN) in DDC Card Manager.

**Procedure** :

1. Pre-requisites for installation:

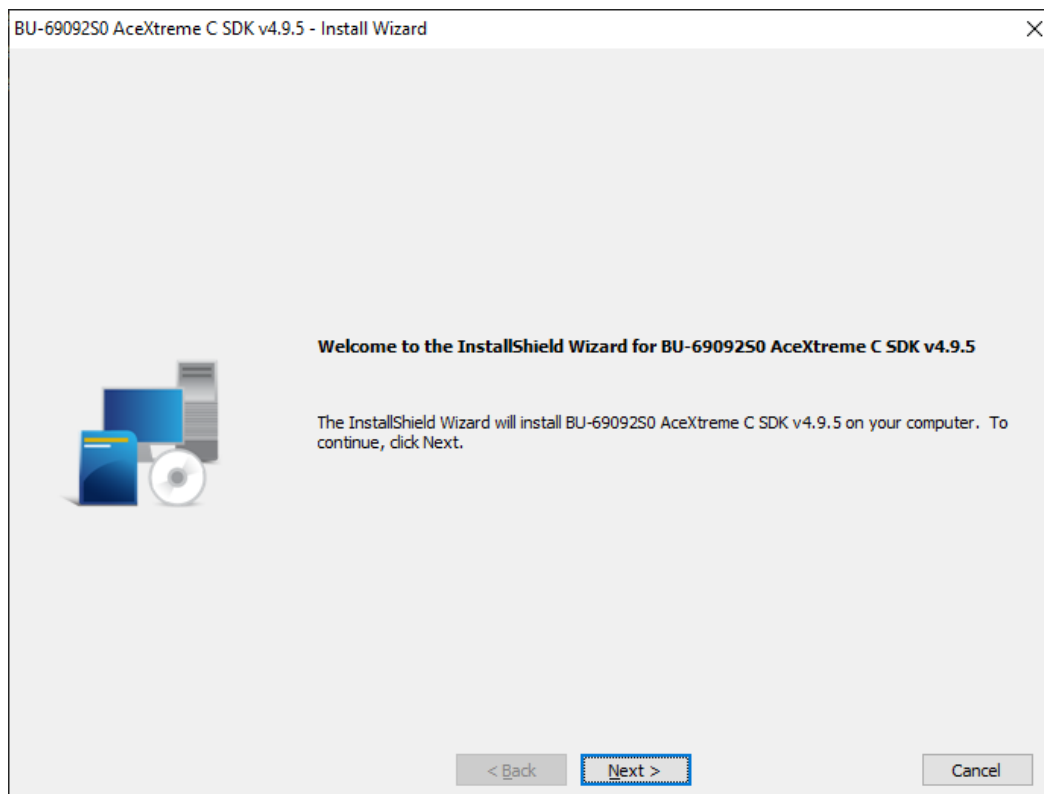
- Download the BU-69092S0 AceXtreme SDK for Windows from the website of Data Device Corporation ([www.ddc-web.com](http://www.ddc-web.com)). Please note that the SDK versions to be used are different for Windows 8 and below and Windows 10 and above. Ensure to download the correct version of the SDK to match your Windows version.
- Disable Anti Virus tools as they may interfere with the installation process.

2. Login as administrator.

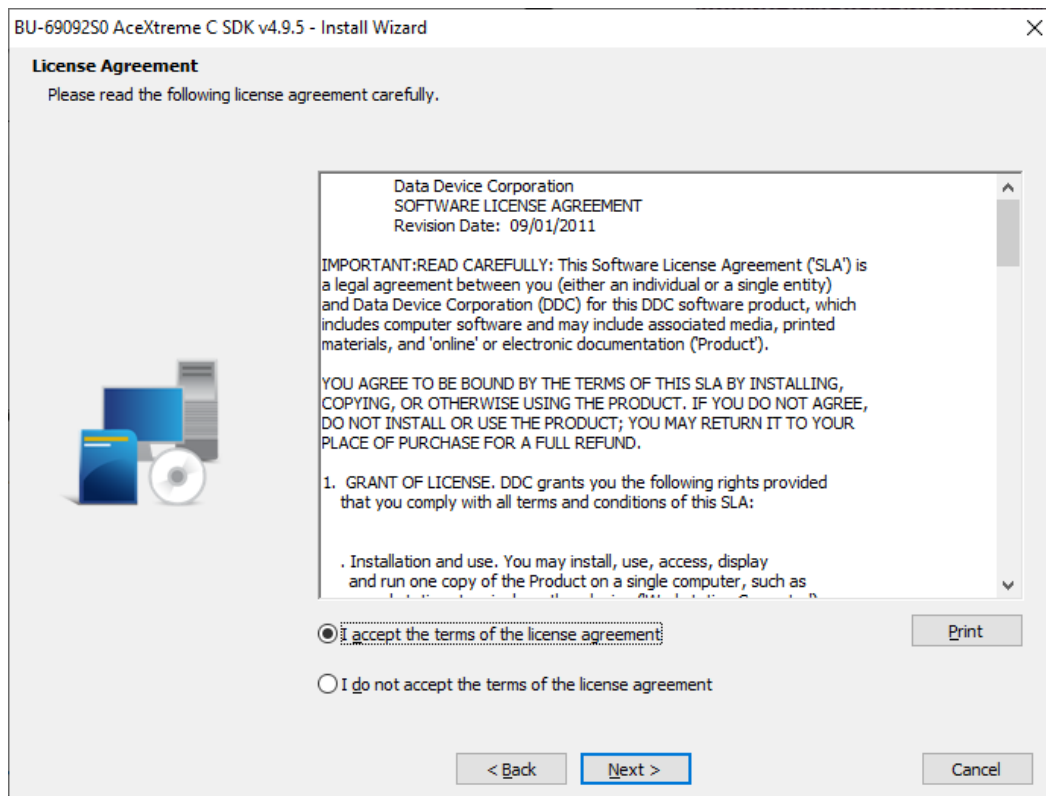
3. Create a folder on Desktop named *DDC* and unzip the *BU-69092S0\_x\_y\_z.zip* (downloaded from DDC's website) into it.

4. Run the installer file (e.g. *BU-69092S0\_4.9.5.1\_setup.exe*) from the unzipped folder.

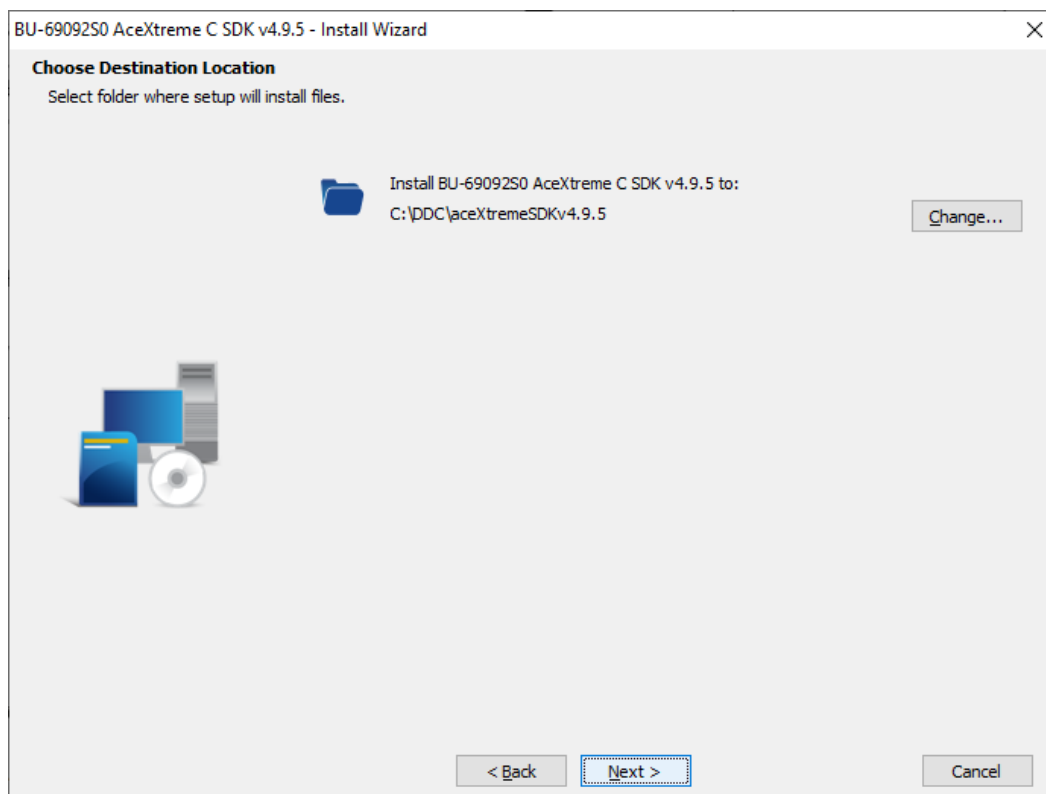
5. Press "Next" on the window that is displayed.



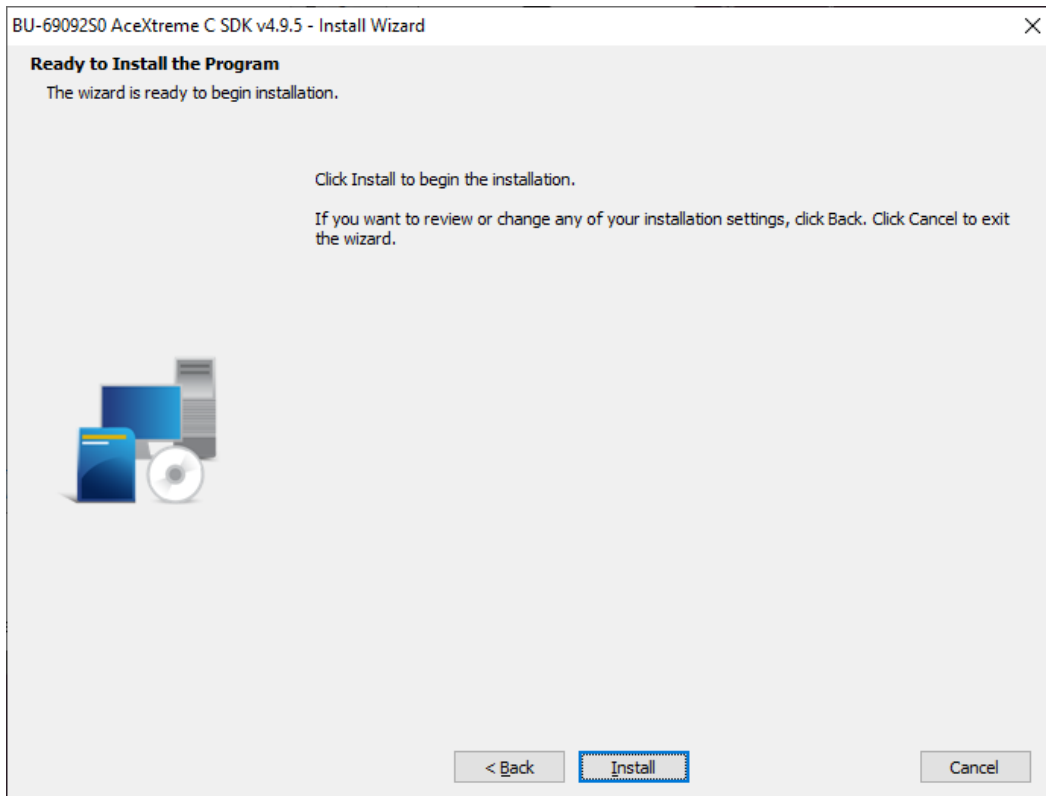
6. Click on the “I accept the terms of the license agreement” radio button and press “Next”.



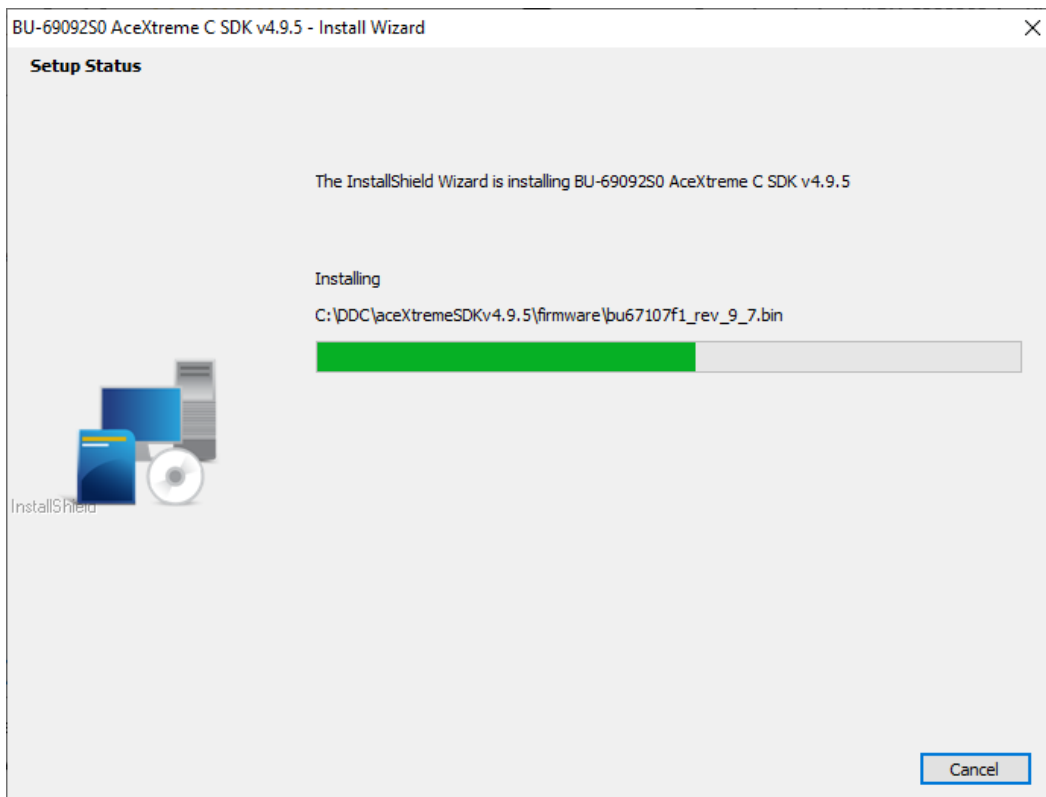
7. Choose a folder by pressing “Change...” or retain the default location (recommended) and press “Next”.



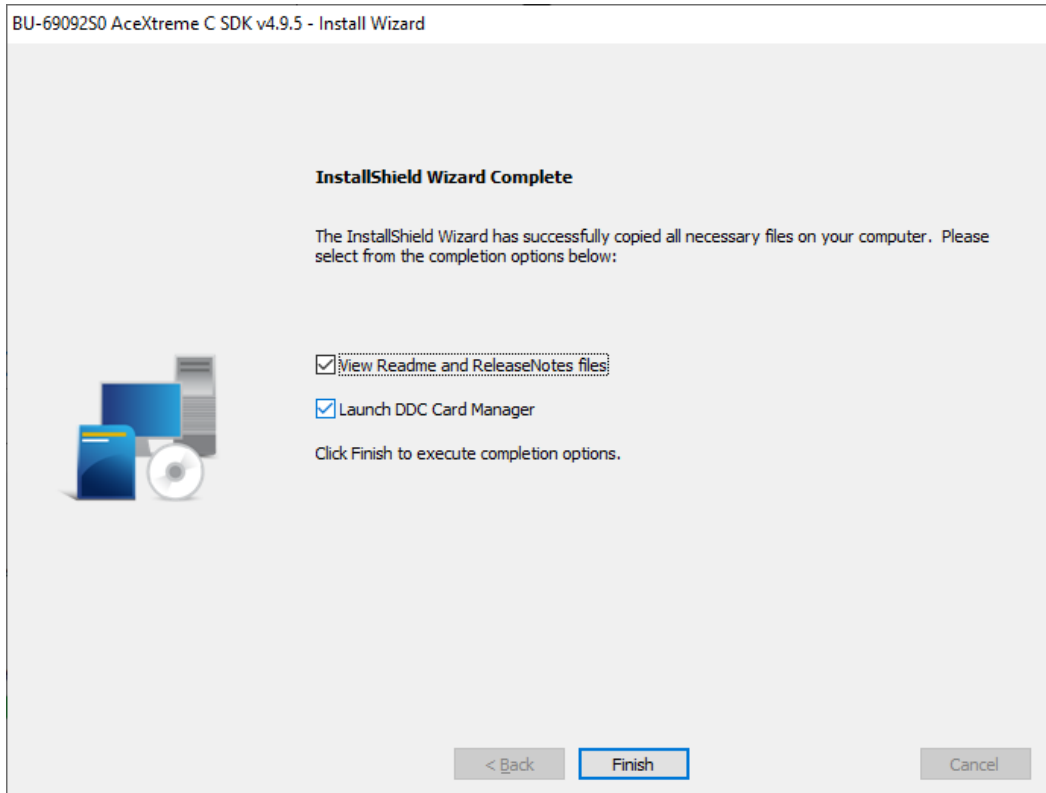
8. Press "Install" to begin the installation.



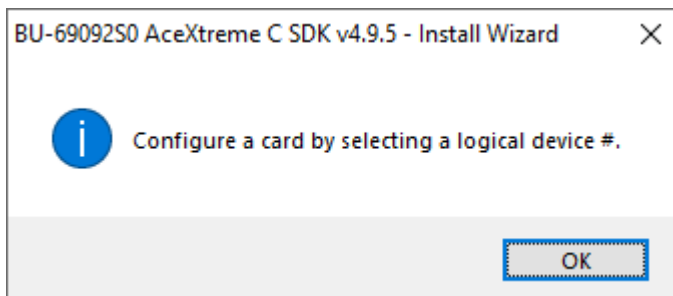
9. Allow the installation process to progress.



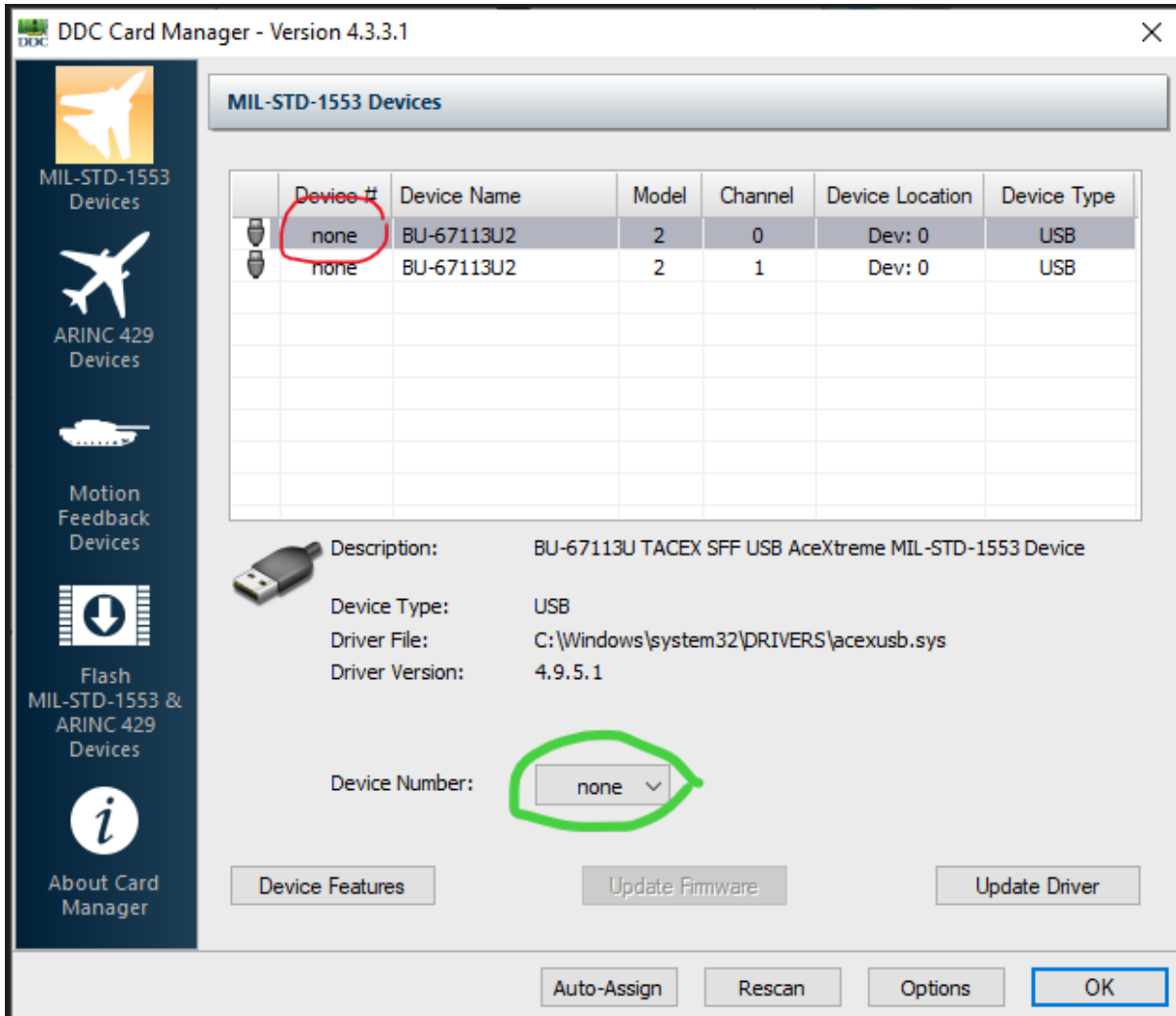
10. Press "Finish" to complete the installation.



11. Upon completion, the release notes opens in Notepad which may be closed. The following popup is also displayed by the DDC Card Manager that is just launched. Press OK.



12. The DDC Card Manager opens and displays channels from any DDC 1553 card connected to the computer. In the snapshot below it is displaying two 1553 channels from the BU-67113U200R card connect to the computer.



13. In order to allow applications to use any channel detected in the DDC Card Manager, a valid Logical Device Number (LDN) is to be assigned to it. The “Device #” column displays the LDN assigned to each channel. In the snapshot above no channels have been assigned a LDN. To set an LDN, pull down the “Device Number:” combo box and choose a number between 0 and 31. Repeat this step for all channels detected on the computer. Once done press OK. The 1553 card is now ready to use by any application.

14. The LDN setting is a one-time process for a computer. Any setting made is remembered by DDC Card Manager. The DDC card manager may be launched at any time from Start Menu->Data Device Corporation to make changes to the LDN or to assign LDN's to newly connected channels.